

Model  
**save4ever VI**



**Security level: Class VI**  
according to EN 1143-1:2019  
**Fire rating: Fire-protected safes**  
according to EN 15659:2019 LFS 30 P

Suitable for the storage of:

- valuables
- documents

**Description**

Series **save4ever VI** - safes with ECB•S certificate for storage of valuables.  
Double protective mechanism: additional glass plate, which triggers bolting protection against the burglary attempt.

**Body:** multi-walled body  
**Door:** multi -walled door construction with stainless steel handle for easy door opening  
**Locking:** 2-way locking bolt system - incl. overlapping profile on the hinge side.

**Standard option**

**Lock:** 2 high security key locks III class VdS III - class C (each lock with 2 keys)  
**Boltwork handle:** handle, protruding 79 mm  
**Hinges:** external  
**Door opening angle:** 180°  
**Mounting holes:** 1 hole in the bottom, 1 blind hole in the back wall up to 1/3 height (assembly set for 1 hole as standard)  
**Additional equipment:** each model prepared for alarm installation  
**Colour:** RAL 9005, RAL 7035

Model  
**save4ever VI**

Art. No.	Model	Outer dimensions*			Inner dimensions			Door light		Anchoring		Weight Kg	Shelves Number	Volume Liters	Hooks Number
		Height mm	Width mm	Depth mm	Height mm	Width mm	Depth mm	Height mm	Width mm	Bottom number	Backwall number				
428100.00	save4ever VI	790	660	620	550	410	305	544	386	1	1 **	740	1	69	5 ***
428101.00	save4ever VI	840	690	620	600	440	305	594	416	1	1 **	810	1	81	5 ***
428102.00	save4ever VI	990	690	620	750	440	305	744	416	1	1 **	930	1	101	5 ***
428103.00	save4ever VI	1190	690	620	950	440	305	944	416	1	1 **	1090	2	127	5 ***
428104.00	save4ever VI	1340	690	620	1100	440	305	1094	416	1	1 **	1220	2	148	5 ***
428105.00	save4ever VI	1490	690	620	1250	440	305	1244	416	1	1 **	1340	3	168	5 ***

\* excluding hinges, handles and fittings \*\* not drilled \*\*\* hook strip for self assembly



Body: multi-walled body



Door: multi -walled door construction with stainless steel handle for easy door opening

**Closure options**

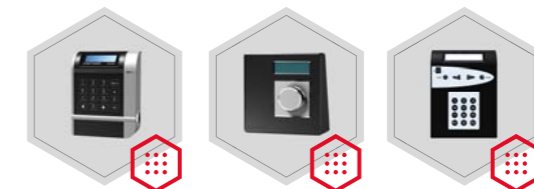
Option without additional charge



810137.00  
Key lock class C/III with 2 keys (1 standard, 1 detachable)

810205.01 / 820203.00  
Mechanical combination lock ZK 1947 La Gard C  
Knob ZK LG 2085

Options available against surcharge

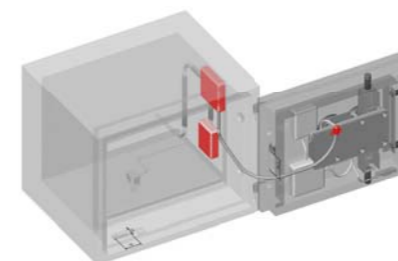


810329.01  
Electronic lock Gator 8000 + DF v. 01  
2 locks  
1 DF keypad  
Gator Signal Box  
Gator Power Adapter  
Bolt sensor  
Power supply

810354.01  
Electronic lock Paxos Advance set 3+5 v. 01  
2 locks  
1 DIAL housing

810355.01  
Electronic lock Twinlock C800 Business LS 2.1 VdS 3  
1 x FlatControl Business LS lock keypad  
2 x INSYS Lock 800 LS lock  
1 TwinConnect - central power connection  
1 TwinXT II  
1 12 V power supply 5 m

**Accessories available against surcharge**



Alarm system (EMA) - complete set (also available in single positions).

When installing the alarm system or single components, the safe is equipped with the bottom cover, which diminishes the safe space inside by 30 mm.

\* due to the inner dimensions of the safes, the full alarm installation is available from model 428101.xx. In model 428100.xx - the alarm elements are on request.



All information concerning weight, color and dimensions are noncommittal and subject to errors and changes. Minor deviations are conditional on the production process. Technical changes, modifications and printing errors reserved. Safes may be top-heavy, during commissioning, please exercise appropriate caution in accordance with the installation guide. Pictograms are not technical description of the product.