

## Model St. Gallen Super Kombi



**Security level:**  
class I according to EN 1143-1 certified by ECB•S

All models equipped with LED lighting as standard.  
Cable exit for connection in the right wall.

Suitable for the storage of:

- long, short weapons
- ammunition

### Product description

St. Gallen Super Kombi series - for storage rifle and short guns.

**Body:** multi-walled body (25 mm thick)

**Door:** multi-walled door construction (84 mm thick)

**Locking:** 4-way locking bolt system - incl. overlapping profile on the hinge side

### Standard option

**Lock:** high security lock I class VdS/IMP class A with two keys (95 mm)

**Boltwork handle:** handle, protruding 60 mm

**Hinges:** external

**Door opening angle:** 180°

**Mounting holes:** 1 in the bottom and 1 in the back wall

**Colour:** RAL 7035 light gray and RAL7024 dark gray

## Model St. Gallen Super Kombi

Art. nr	Model	Wymiary zewn. *			Wymiary wewn.			Max wysokość ustawienia broni		Otwory do montażu		Waga Kg	Ilość półek Szt.	Uchwyty na broń Ilość szt.	Sejf wewn. Wys. mm
		Wys. mm	Szer. mm	Gl. mm	Wys. mm	Szer. mm	Gl. mm	Wys. mm	Dno ilość	Tył ilość					
564003.50.01	St.Gallen Super Kombi	1550	940	560	1500	880	450	1500	1	1***	370	2+2	27	-	
564003.50.02	St.Gallen Super Kombi	1550	940	560	1500	880	450	1500	1	1***	370	2+2	28	-	
564003.50.03	St.Gallen Super Kombi	1550	940	560	1500	880	450	1500	1	1***	340	2+2	31	-	
564003.50.04	St.Gallen Super Kombi	1550	940	560	1500	880	450	1500	1	1***	350	2+2	30	-	
564003.50.05	St.Gallen Super Kombi	1550	940	560	1500	880	450	1500	1	1***	370	3+2	15	-	
564003.50.06	St.Gallen Super Kombi	1550	940	560	1500	880	450	1500	1	1***	340	3+2	18	-	
564004.50.01	St.Gallen Super Kombi **	1550	1190	560	1500	1130	450	1500	1	1***	460	2+1+2	36	-	
564004.50.02	St.Gallen Super Kombi **	1550	1190	560	1500	1130	450	1500	1	1***	460	2+1+2	37	-	
564004.50.03	St.Gallen Super Kombi **	1550	1190	560	1500	1130	450	1500	1	1***	430	2+4+2	31	-	
564004.50.04	St.Gallen Super Kombi **	1550	1190	560	1500	1130	450	1500	1	1***	460	2+1+3	27	-	
564004.50.05	St.Gallen Super Kombi **	1550	1190	560	1500	1130	450	1500	1	1***	450	2+2+2	37	-	
564004.50.06	St.Gallen Super Kombi **	1550	1190	560	1500	1130	450	1500	1	1***	410	3+2	27	-	
564004.50.07	St.Gallen Super Kombi **	1550	1190	560	1500	1130	450	1500	1	1***	430	2+2	31	-	
564005.50.01	St.Gallen Super Kombi	1850	940	560	1800	880	450	1800	1	1***	430	2+1	27	180	
564005.50.02	St.Gallen Super Kombi	1850	940	560	1800	880	450	1800	1	1***	430	2+1	28	180	
564005.50.03	St.Gallen Super Kombi	1850	940	560	1800	880	450	1800	1	1***	395	2+1	31	180	
564005.50.04	St.Gallen Super Kombi	1850	940	560	1800	880	450	1800	1	1***	400	2+1	30	180	
564005.50.05	St.Gallen Super Kombi	1850	940	560	1800	880	450	1800	1	1***	415	4+2	15	180	
564005.50.06	St.Gallen Super Kombi	1850	940	560	1800	880	450	1800	1	1***	400	4+2	18	180	
564006.50.01	St.Gallen Super Kombi **	1850	1190	560	1800	1130	450	1800	1	1***	518	2+2	36	180	
564006.50.02	St.Gallen Super Kombi **	1850	1190	560	1800	1130	450	1800	1	1***	510	2+2	37	180	
564006.50.03	St.Gallen Super Kombi **	1850	1190	560	1800	1130	450	1800	1	1***	500	2+3+2	31	180	
564006.50.04	St.Gallen Super Kombi **	1850	1190	560	1800	1130	450	1800	1	1***	520	2+3	27	180	
564006.50.05	St.Gallen Super Kombi **	1850	1190	560	1800	1130	450	1800	1	1***	505	2+2+2	37	180	
564006.50.06	St.Gallen Super Kombi **	1850	1190	560	1800	1130	450	1800	1	1***	470	4+2	27	-	
564006.50.07	St.Gallen Super Kombi **	1850	1190	560	1800	1130	450	1800	1	1***	480	2+2	31	-	

\* excluding hinges, handles and fittings \*\* 2-door \*\*\* not drilled



Body: multi-walled body (25 mm thick)

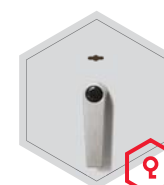


Door: multi-walled door construction (84 mm thick)

### Closure options

Standard option

Options available against surcharge



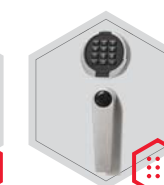
Key lock



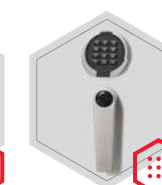
Electronic lock Stellar Basic



Electronic lock Stellar Business



Electronic lock Primor 3000 level 5



Electronic lock Primor 3000 level 15



Electronic lock B 90



All information concerning weight, color and dimensions are noncommittal and subject to errors and changes. Minor deviations are conditional on the production process. Technical changes, modifications and printing errors reserved. Safes may be top-heavy, during commissioning, please exercise appropriate caution in accordance with the installation guide. Pictograms are not technical description of the product.



Art. nr	Model	Uchwyty na broń na magnesach			Przegroda	Ilość półek przestawnych	Ilość pojemników do zawieszania		Ilość haków na listwie	Ruchoma ścianka na broń / uchwyty na broń na szynie 55 mm	Część cargo / uchwyty na broń na szynie 65 mm
		55 mm (tył)	55 mm (przód)	65 mm (przód)			na drzwiach	w sejście			
		Ilość szt.	Ilość szt.	Ilość szt.			Szt.	Szt.			
564003.50.01	St.Gallen Super Kombi	3+4+3	5	6+6	1	2+2	4	9	11	1	1
564003.50.02	St.Gallen Super Kombi	3+4+3	-	6+6+6	1	2+2	4	8	11	-	1
564003.50.03	St.Gallen Super Kombi	3+4+4+4+3	-	6+7	1	2+2	4	2	11	-	-
564003.50.04	St.Gallen Super Kombi	3+4+4+4+3	5	7	1	2+2	4	3	11	1	-
564003.50.05	St.Gallen Super Kombi	3	-	6+6	1	3+2	4	8	11	-	1
564003.50.06	St.Gallen Super Kombi	4+4+3	-	7	1	3+2	4	2	11	-	-
564004.50.01	St.Gallen Super Kombi	3+4+3+2+3	5	4+6+6	2	2+1+2	4+4	9	7+7	1	1
564004.50.02	St.Gallen Super Kombi	3+4+3+2+3	-	6+4+6+6	2	2+1+2	4+4	8	7+7	-	1
564004.50.03	St.Gallen Super Kombi	3+4+3+2+3+3+3	-	6+4	2	2+4+2	4+4	4	7+7	-	-
564004.50.04	St.Gallen Super Kombi	3+4+3	5	6+6	2	2+1+3	4+4	9	7+7	1	1
564004.50.05	St.Gallen Super Kombi	3+4+3+4+3+2+3	5	6+4	2	2+2+2	4+4	5	7+7	1	-
564004.50.06	St.Gallen Super Kombi	2+3+4+4+3	-	11	1	3+2	4+4	2	7+7	-	-
564004.50.07	St.Gallen Super Kombi	3+4+2+3+4+4+3	5	11	1	2+2	4+4	3	7+7	1	-
564005.50.01	St.Gallen Super Kombi	3+4+3	5	6+6	1	2+1	4	9	11	1	1
564005.50.02	St.Gallen Super Kombi	3+4+3	-	6+6+6	1	2+1	4	8	11	-	1
564005.50.03	St.Gallen Super Kombi	3+4+4+4+3	-	6+7	1	2+1	4	2	11	-	-
564005.50.04	St.Gallen Super Kombi	3+4+4+4+3	5	7	1	2+1	4	3	11	1	-
564005.50.05	St.Gallen Super Kombi	3	-	6+6	1	4+1	4	8	11	-	1
564005.50.06	St.Gallen Super Kombi	4+4+3	-	7	1	4+1	4	2	11	-	-
564006.50.01	St.Gallen Super Kombi	3+4+3+2+3	5	4+6+6	2	2+2	2+2*+4	9	7+7	1	1
564006.50.02	St.Gallen Super Kombi	3+4+3+2+3	-	6+4+6+6	2	2+2	2+2*+4	8	7+7	-	1
564006.50.03	St.Gallen Super Kombi	3+4+3+2+3+3+3	-	6+4	2	2+3+2	2+2*+4	4	7+7	-	-
564006.50.04	St.Gallen Super Kombi	3+4+3	5	6+6	2	2+3	2+2*+4	9	7+7	1	1
564006.50.05	St.Gallen Super Kombi	3+4+3+4+3+2+3	5	6+4	2	2+2+2	2+2*+4	5	7+7	1	-
564006.50.06	St.Gallen Super Kombi	2+3+4+4+3	-	11	1	4+2	2+2*+4	2	7+7	-	-
564006.50.07	St.Gallen Super Kombi	3+4+2+3+4+4+3	5	11	1	2+2	2+2*+4	3	7+7	1	-

\* container for documents storing



**ADJUSTABLE WEAPON HOLDERS**  
on rails and magnets



**MOVABLE WALL FOR WEAPONS**  
closing inwards

## PULL-OUT UNIT FOR WEAPONS

with storing containers at the top and the hiding space at the bottom

All information concerning weight, color and dimensions are noncommittal and subject to errors and changes. Minor deviations are conditional on the production process. Technical changes, modifications and printing errors reserved. Safes may be top-heavy, during commissioning, please exercise appropriate caution in accordance with the installation guide. Pictograms are not technical description of the product.