

Model
save4ever III



Security level: Class III according to EN 1143-1

Suitable for the storage of:

- documents
- valuables

Description

Series **save4ever III** - high security safe - ECB*S certification.

Body: multi-walled body (50 mm thick)

Door: multi-walled door construction (106 mm thick)

Locking: 4-way locking bolt system - incl. overlapping profile on the hinge side

Standard option

Lock: high security key lock II class VdS with two keys (135 mm)

Boltwork handle: handle, protruding 60 mm

Hinges: external

Door opening angle: 180°

Mounting holes: 1 hole in the floor, 1 on the backwall (not drilled) up to 1/3 height

Colour: RAL 7035, RAL 7024



Model
save4ever III

Art. No.	Model	Outer dimensions*			Inner dimensions			Door light		Anchoring		Weight Kg	Shelves Number	Files Number	Volume Liters	Hooks Number
		Height mm	Width mm	Depth mm	Height mm	Width mm	Depth mm	Height mm	Width mm	Bottom number	Backwall number					
419100.00	save4ever III	450	450	465	350	340	305	318	334	1	1**	177	1	4	36	5***
419101.00	save4ever III	550	550	465	450	440	305	418	434	1	1**	239	1	7	60	5***
419102.00	save4ever III	700	550	465	600	440	305	568	434	1	1**	287	1	9	81	5***
419103.00	save4ever III	850	550	465	750	440	305	718	434	1	1**	335	1	10	101	5***
419104.00	save4ever III	1050	550	465	950	440	305	918	434	1	1**	401	2	15	127	5***
419105.00	save4ever III	1200	550	465	1100	440	305	1068	434	1	1**	450	2	18	148	5***
419106.00	save4ever III	1350	550	465	1250	440	305	1218	434	1	1**	501	2	20	168	5***

* excluding hinges, handles and fittings ** not drilled *** hook strip for self assembly



Body: multi-walled body (50 mm thick)

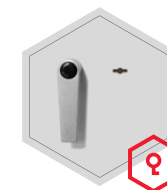


Door: multi-walled door construction (106 mm thick)

Closure options

Standard option

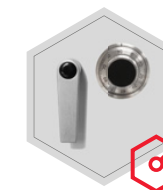
Options available against surcharge



Key lock



Electronic lock Solar Basic



Mechanical code lock



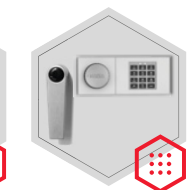
Electronic lock Solar Business



Electronic lock Primor 3000 level 5



Electronic lock Primor 3000 level 15



Electronic lock B 30 (Excl. 419100.00)



All information concerning weight, color and dimensions are noncommittal and subject to errors and changes. Minor deviations are conditional on the production process. Technical changes, modifications and printing errors reserved. Safes may be top-heavy, during commissioning, please exercise appropriate caution in accordance with the installation guide. Pictograms are not technical description of the product.

