



**Security level: Class S1 according to EN 14450**  
**Security level: according to A VDMA 24992 - Conditions May '95**

Model with drop box in front, opening to bottom with outgoing sheet metal.  
 A drop box closed with a certified key lock.  
 Modelle 35700-35702 H\*B\*T 230\*170\*20 mm,  
 modele 35703-35705 H\*B\*T 230\*370\*20 mm.

Suitable for the storage of:  
 office documents, office equipment  
 valuables

Safes standardly prepared for assembly of electronic or mechanical combination locks, indicated by the manufacturer.

**Description**  
 Peine series - deposit safes.

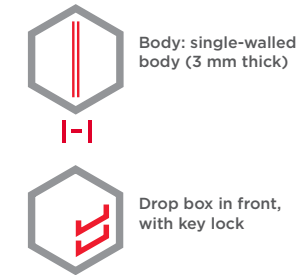
**Body:** single-walled body (3 mm thick)  
**Door:** double-walled door construction (52 mm thick)  
**Locking:** 4-way locking bolt system

**Standard option**  
**Lock:** high security key lock I class VdS with two keys  
**Boltwork handle:** knob and key lock rosette protruding 12 mm  
**Hinges:** internal  
**Door opening angle:** 90°  
**Mounting holes:** 2 holes in the floor and in backwall  
**Colour:** RAL 7035 (light grey)



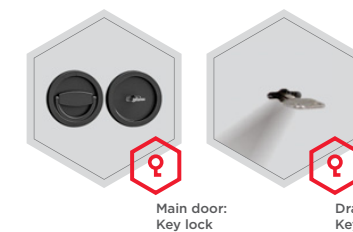
Art. No.	Model	Outer dimensions*			Inner dimensions			Door light		Anchoring		Weight Kg	Shelves Number	Volume Liters
		Height mm	Width mm	Depth mm	Height mm	Width mm	Depth mm	Height mm	Width mm	Bottom number	Backwall number			
35700	Peine	600	250	250	367	232	183	335	110	2	2	27	-	16
35701	Peine	800	250	250	567	232	183	535	110	2	2	34	-	24
35702	Peine	1000	250	250	767	232	183	735	110	2	2	42	-	33
35703	Peine	600	460	460	249	442	393	335	320	2	2	55	-	43
35704	Peine	800	460	460	449	442	393	535	320	2	2	68	-	78
35705	Peine	1000	460	460	649	442	393	735	320	2	2	81	-	112

\* excluding hinges, handles and fittings

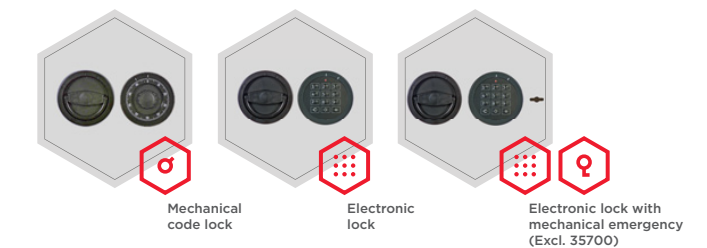


**Closure options**

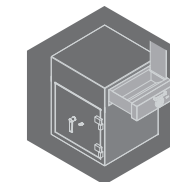
Standard option



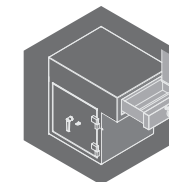
Options available against surcharge



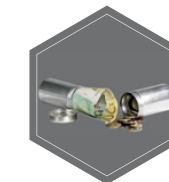
**Accessories available against surcharge**



Not protruding drawer / back / side



Protruding drawer / back / side



Safe box



RAL 7035



RAL 9006



RAL 7024

All information concerning weight, color and dimensions are noncommittal and subject to errors and changes. Minor deviations are conditional on the production process. Technical changes, modifications and printing errors reserved. Safes may be top-heavy, during commissioning, please exercise appropriate caution in accordance with the installation guide. Pictograms are not technical description of the product.

The picture shows an example of a safe for deposit - model Peine Art. No. 35705 with additional equipment.

Art. No. 35703

