



**Security level: Class S2 according to EN 14450**  
**Security level: B according to VDMA 24992 - Conditions May'95**  
**Fire rating: Fire-protected safes according to EN 15659 LFS 30 P**

Suitable for the storage of:

- office documents, office equipment
- gun (see additional accessories)
- keys (see additional accessories)

Safes standardly prepared for assembly of electronic or mechanical combination locks, indicated by the manufacturer.

**Description**

Series Düsseldorf Mettmann - document safes.

**Body:** double-walled body (65,5 mm thick)  
**Door:** multi-walled door construction (94 mm thick)  
**Locking:** 4-way locking bolt system - incl. fix bolts on the hinge side

**Standard option**

**Lock:** high security key lock I class VdS with two keys (120 mm)

**Boltwork handle:** handle, protruding 60mm and key lock rosette, protruding 12 mm

**Hinges:** external

**Door opening angle:** 180°

**Mounting holes:** 2 holes in the floor

**Colour:** RAL 7035 (light grey)



Art. No.	Model	Outer dimensions*			Inner dimensions			Door light		Anchoring		Weight Kg	Shelves Number	Files Number	Volume Liters
		Height mm	Width mm	Depth mm	Height mm	Width mm	Depth mm	Height mm	Width mm	Bottom number	Backwall number				
39200	Düsseldorf Mettmann	375	495	472	229	355	293	229	324	2	-	59	1	3	23
39201	Düsseldorf Mettmann	475	385	472	329	245	293	329	214	2	-	58	1	3	23
39202	Düsseldorf Mettmann	475	495	472	329	355	293	329	324	2	-	68	1	4	34
39203	Düsseldorf Mettmann	675	495	472	529	355	293	529	324	2	-	84	1	6	55
39204	Düsseldorf Mettmann	825	495	472	679	355	293	679	324	2	-	100	1	8	70
39205	Düsseldorf Mettmann	1175	705	527	1029	565	348	1029	534	2	-	178	2	21	202
39206	Düsseldorf Mettmann	1525	705	527	1379	565	348	1379	534	2	-	217	3	28	271
39207	Düsseldorf Mettmann	1875	705	527	1729	565	348	1729	534	2	-	268	4	35	339
39208	Düsseldorf Mettmann**	1175	955	527	1029	815	348	1029	784	2	-	230	2	30	291
39209	Düsseldorf Mettmann**	1875	955	527	1729	815	348	1729	784	2	-	338	4	50	490
39210	Düsseldorf Mettmann**	1875	1305	527	1729	1165	348	1729	1134	2	-	416	4	75	700

\* excluding hinges, handles and fittings  
 \*\* 2-door



Body: double-walled body (65,5 mm thick)

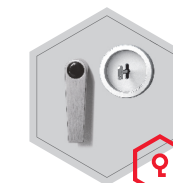


Door: multi-walled door construction (94 mm thick)

**Closure options**

Standard option

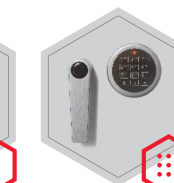
Options available against surcharge



Key lock



Mechanical code lock

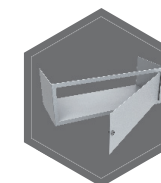


Electronic lock

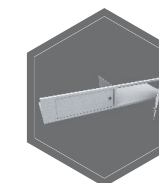


Electronic lock with mechanical emergency (Excl. 39201)

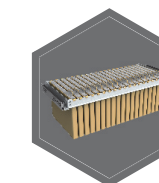
**Accessories available against surcharge**



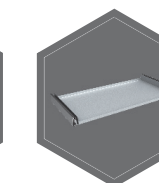
Inner safe



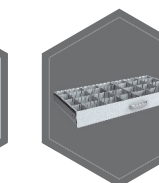
Inner safe with partition wall, 2 - door



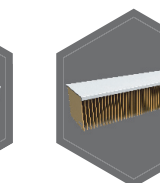
Extensible file frame



Extendable shelf



Extendable drawer for individual arrangement

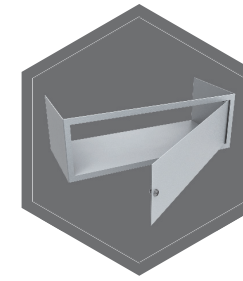


Shelf for hanging files

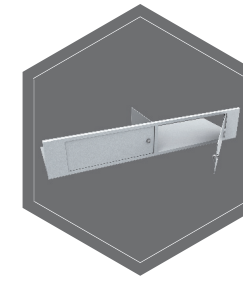


All information concerning weight, color and dimensions are noncommittal and subject to errors and changes. Minor deviations are conditional on the production process. Technical changes, modifications and printing errors reserved. Safes may be top-heavy, during commissioning, please exercise appropriate caution in accordance with the installation guide. Pictograms are not technical description of the product.

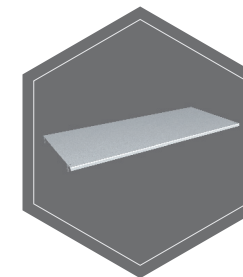
The picture shows an example of a safe for documents - model Hagen 39318 with additional equipment.



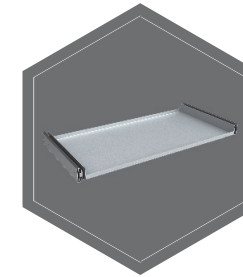
Inner safe



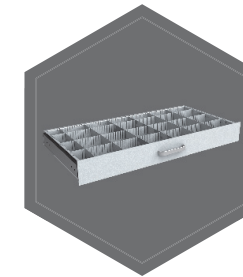
Inner safe with partition wall, 2 - door



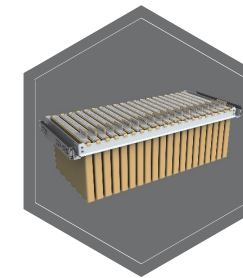
Shelf



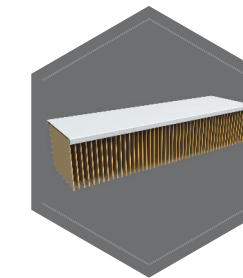
Extendable shelf



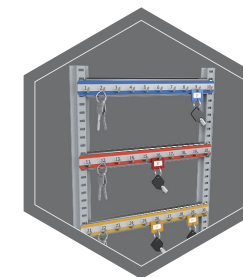
Extendable drawer for individual arrangement



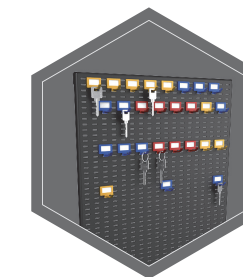
Extendible file frame



Shelf for hanging files



Hook bars



System of hooks on the inner side of the doors