




Model  
**Potsdam Super**



**Security level: Class S1 according to EN 14450**

Suitable for the storage of:

-  office documents, office equipment
-  gun (see additional accessories)
-  keys (see additional accessories)

**Description**

Series Potsdam Super - document safes.

**Body:** double-walled body (30 mm thick)

**Door:** double-walled door construction (81 mm thick)

**Locking:** 4-way locking bolt system - incl. fix bolts on the hinge side

**Standard option**

**Lock:** high security key lock I class VdS with two keys (95 mm)

**Boltwork handle:** handle, protruding 60mm

**Hinges:** external

**Door opening angle:** 180°

**Mounting holes:** 2 holes in the floor and back wall

**Colour:** RAL 7035 (light grey)



Model  
**Potsdam Super**

Art. No.	Model	Outer dimensions*			Inner dimensions			Door light		Anchoring		Weight Kg	Shelves Number	Files Number	Volume Liters
		Height mm	Width mm	Depth mm	Height mm	Width mm	Depth mm	Height mm	Width mm	Bottom number	Backwall number				
37300	Potsdam Super**	1950	1500	550	1890	1428	435	1801	1351	2	2	365	2 x 4	93	1174
37301	Potsdam Super**	1950	1830	550	1890	1758	435	1801	1681	2	2	415	2 x 4	114	1445

\* excluding hinges, handles and fittings  
\*\* 2-door



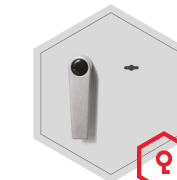
Body: double-walled body (30 mm thick)



Door: double-walled door construction (81 mm thick)

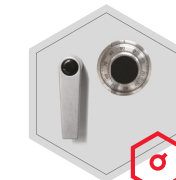
**Closure options**

Standard option



Key lock

Options available against surcharge



Mechanical code lock

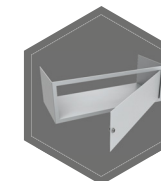


Electronic lock

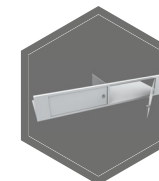


Electronic lock with mechanical emergency

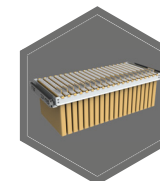
**Accessories available against surcharge**



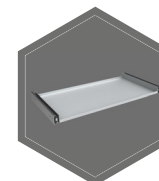
Inner safe



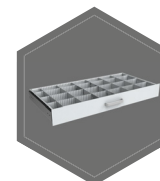
Inner safe with partition wall, 2 - door



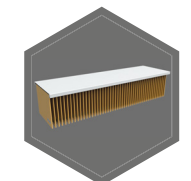
Extensible file frame



Extendable shelf




Extendable drawer for individual arrangement

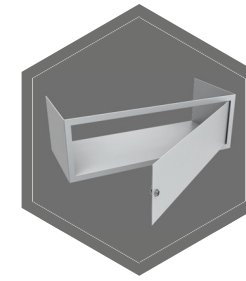


Shelf for hanging files

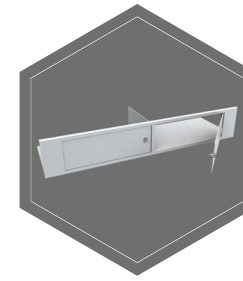


 All information concerning weight, color and dimensions are noncommittal and subject to errors and changes. Minor deviations are conditional on the production process. Technical changes, modifications and printing errors reserved. Safes may be top-heavy, during commissioning, please exercise appropriate caution in accordance with the installation guide. Pictograms are not technical description of the product.

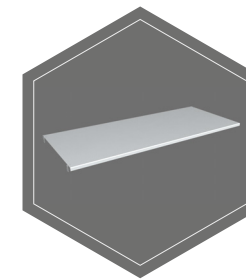
The picture shows an example of a safe for documents - model Hagen 39318 with additional equipment.



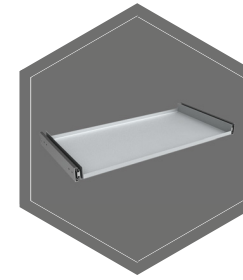
Inner safe



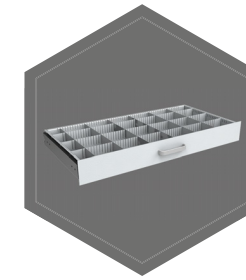
Inner safe with partition wall, 2 - door



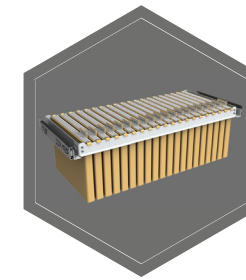
Shelf



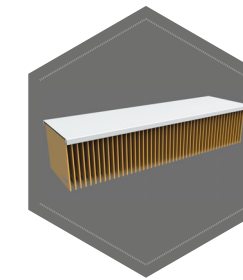
Extendable shelf



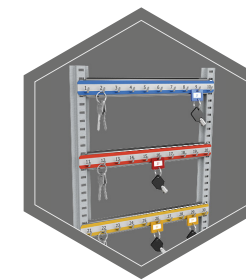
Extendable drawer for individual arrangement



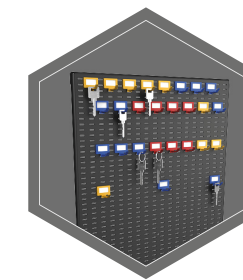
Extensible file frame



Shelf for hanging files



Hook bars



System of hooks on the inner side of the doors