



Security level: Class D-III according to EN 1143-2

Drum drawer located at the front of safe without lock - type "trommel".

Suitable for the storage of:

- office documents, office equipment
- valuables

Description

Madrid series - drawer deposit safes.

Body: multi-walled body (60 mm thick)

Door: multi-walled door construction (130 mm thick)

Locking: 4-way locking bolt system

Standard option

Lock: safe equipped with high security key lock II class VdS with two keys

Boltwork handle: main door with the handle protruding 60 mm, the drawer equipped with the grip

Hinges: external

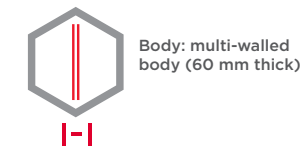
Door opening angle: 180°

Mounting holes: 1 hole in the floor

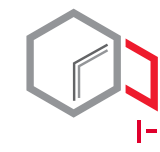
Colour: RAL 7035 (light grey)

Art. No.	Model	Outer dimensions*			Inner dimensions			Door light		Anchoring		Weight	Shelves	Volume
		Height mm	Width mm	Depth mm	Height mm	Width mm	Depth mm	Height mm	Width mm	Bottom number	Backwall number	Kg	Number	Liters
36700	Madrid	1094	680	680	391	548	476	456	530	1	-	860	1	99
36701	Madrid	1294	680	680	591	548	476	656	530	1	-	960	1	150
36702	Madrid	1494	680	680	791	548	476	856	530	1	-	1060	1	203

* excluding hinges, handles and fittings



Body: multi-walled body (60 mm thick)



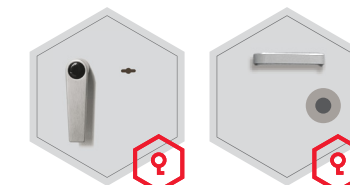
Door: multi-walled door construction (130 mm thick)



Drawer: drum drawer located at the front of safe without lock - type „trommel“

Closure options

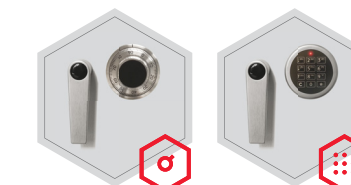
Standard option



Main door: Key lock

Drawer: Grip, release button

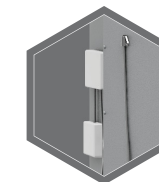
Options available against surcharge



Mechanical code lock

Electronic lock

Accessories available against surcharge



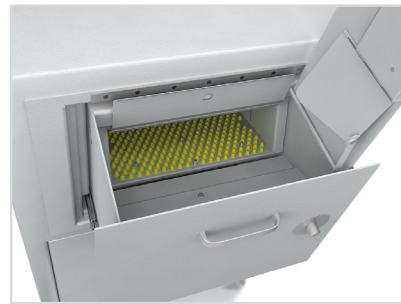
Alarm system elements / Alarm



All information concerning weight, color and dimensions are noncommittal and subject to errors and changes. Minor deviations are conditional on the production process. Technical changes, modifications and printing errors reserved. Safes may be top-heavy, during commissioning, please exercise appropriate caution in accordance with the installation guide. Pictograms are not technical description of the product.



The picture shows an example of a safe for deposit - model Barcelona Art. No. 36600 with additional equipment.



DEPOSIT SLOT IS SUITABLE FOR THE FOLLOWING DEPOSITS (THROW-IN ITEMS)					
Type of deposit	Minimum size dimensions mm	Maximum size dimensions mm	Minimum weight weights gram	Maximum weight weights gram	Material
Letters (comment: an insert can contain a few letters)	114 x 162 (DIN C 6)	229 x 324 (DIN C 4)	3	ca. 1000	paper
Parcel		330 x 230 x 110	3	ca. 2000	paper / carton
Wallet, throw-in bag and cash bag	114 x 162 x 110	330 x 230 x 110	specific	ca. 3000	polyester reinforced foil
Purse	170 x 260	180 x 300	specific	ca. 3000	linen bag
Safebags	114 x 162	330 x 230 x 110	specific	ca. 3000	PVC
Throw-in money cassettes	195 x 111 x 61		specific	ca. 3000	sheet steel cassette

Art. 36701

