

Model
St. Gallen Deposit OV



Security level: Class D-I according to EN 1143-2

The safes equipped with the drawer with locking system without the key.

The values can be deposited in the so called Safe-bags, common envelopes, cash boxes and similar containers. Depending on the tenacity of the deposit container, the dimensions of values to be stored can be as follows:
thickness 100 mm / width 220 mm / length 300 mm.

Models with 1280 mm height made with wall brackets for shelving (shelf - option against surcharge).

Suitable for the storage of:

- office documents, office equipment
- valuables

Description

St. Gallen Deposit OV series - drawer deposit safes.

Body: multi-walled body (40 mm thick)

Door: multi-walled door construction (84 mm thick)

Locking: 4-way locking bolt system - incl. overlapping profile on the hinge side

Standard option

Lock: high security key lock I class VdS with two keys

Boltwork handle: main door with the knob protruding 12 mm, the drawer equipped with the grip

Hinges: external

Door opening angle: 180°

Mounting holes: 4 holes in the floor, 1 blind hole in the back wall

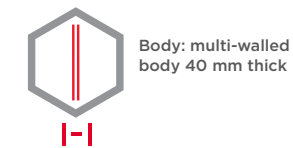
Colour: RAL 7035 (light grey)



Model
St. Gallen Deposit OV

Art. No.	Model	Outer dimensions*			Inner dimensions			Door light		Anchoring		Drawer	Weight
		H mm	W mm	D mm	H mm	W mm	D mm	H mm	W mm	Bottom number	Backwall number		
36260.50	St. Gallen Deposit OV	930	570	510	365	480	390	508	474	4	1 **	in front	172
36261.50	St. Gallen Deposit OV	1280	570	510	715	480	390	858	474	4	1 **	in front	210
36262.50	St. Gallen Deposit OV	930	570	510	365	480	390	508	474	4	1 **	in the back	172
36263.50	St. Gallen Deposit OV	1280	570	510	715	480	390	858	474	4	1 **	in the back	210
36264.50	St. Gallen Deposit OV	930	730	510	365	640	390	508	634	4	1 **	in front	204
36265.50	St. Gallen Deposit OV	1280	730	510	715	640	390	858	634	4	1 **	in front	249
36266.50	St. Gallen Deposit OV	930	570	510+270	365	480	390	508	474	4	1 **	drawer in the back 270 mm	195
36267.50	St. Gallen Deposit OV	1280	570	510+270	715	480	390	858	474	4	1 **	drawer in the back 270 mm	233

* excluding hinges, handles and fittings ** not drilled



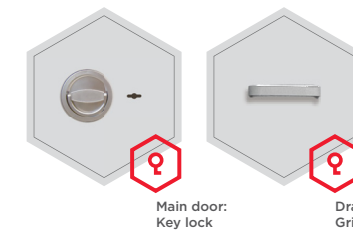
Body: multi-walled body 40 mm thick



Door: multi-walled door construction 84 mm thick

Closure options

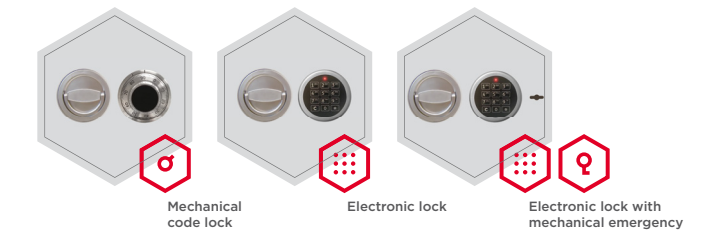
Standard option



Main door: Key lock

Drawer: Grip

Options available against surcharge

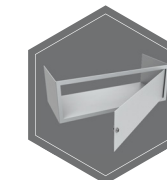


Mechanical code lock

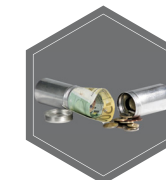
Electronic lock

Electronic lock with mechanical emergency

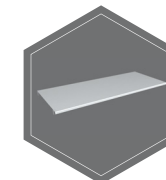
Accessories available against surcharge



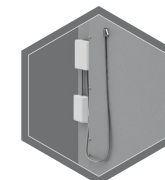
Inner safe



Safe box



shelf



Prepared for alarm system/ alarm system



RAL 7035



RAL 9006



RAL 7024

All information concerning weight, color and dimensions are noncommittal and subject to errors and changes. Minor deviations are conditional on the production process. Technical changes, modifications and printing errors reserved. Safes may be top-heavy, during commissioning, please exercise appropriate caution in accordance with the installation guide. Pictograms are not technical description of the product.