

Model Aachen



Security level: Class S1 according to EN 14450
Security level: A according to VDMA 24992 - Conditions May'95

Suitable for the storage of:

- office documents, office equipment
- gun (see additional accessories)
- keys (see additional accessories)

Description
 Series Aachen - document safes.

Body: single-walled body (3 mm thick)
Door: double-walled door construction (70 mm thick)
Locking: 4-way locking bolt system - incl. fix bolts on the hinge side

Standard option
Lock: high security key lock I class VdS with two keys (120 mm)
Boltwork handle: handle, protruding 60mm
Hinges: external
Door opening angle: 180°
Mounting holes: 2 holes in the floor and back wall
Colour: RAL 7035 (light grey)



Model Aachen

Art. No.	Model	Outer dimensions*			Inner dimensions			Door light		Anchoring		Weight Kg	Shelves Number	Files Number	Volume Liters
		Height mm	Width mm	Depth mm	Height mm	Width mm	Depth mm	Height mm	Width mm	Bottom number	Backwall number				
38000	Aachen	1250	700	500	1244	682	418	1140	590	2	2	128	3	29	354
38001	Aachen	1500	700	500	1494	682	418	1390	590	2	2	149	3	36	425
38002	Aachen	1950	700	500	1944	682	418	1840	590	2	2	187	4	47	554
38003	Aachen	1950	950	550	1944	932	468	1840	840	2	2	242	4	62	848
38004	Aachen**	1950	950	550	1944	932	468	1840	840	2	2	255	4	62	848
38005	Aachen**	1950	1260	550	1944	1242	468	1840	1150	2	2	318	4	83	1130
38006	Aachen**	1200	1260	550	1194	1242	468	1090	1150	2	2	212	3	51	694

* excluding hinges, handles and fittings
 ** 2-door



Body: single-walled body (3mm thick)



Door: double-walled door construction (70 mm thick)

Closure options

Standard option

Key lock

Options available against surcharge

Mechanical code lock

Electronic lock

Electronic lock with mechanical emergency

Accessories available against surcharge

Inner safe

Inner safe with partition wall, 2 - door

Extensible file frame

Extendable shelf

Extendable drawer for individual arrangement

Shelf for hanging files

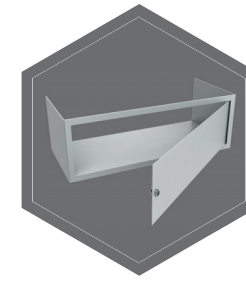
RAL
7035

RAL
9006

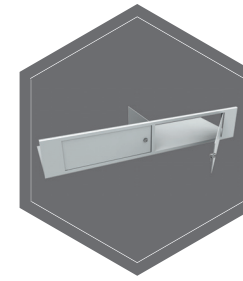
RAL
7024

All information concerning weight, color and dimensions are noncommittal and subject to errors and changes. Minor deviations are conditional on the production process. Technical changes, modifications and printing errors reserved. Safes may be top-heavy, during commissioning, please exercise appropriate caution in accordance with the installation guide. Pictograms are not technical description of the product.

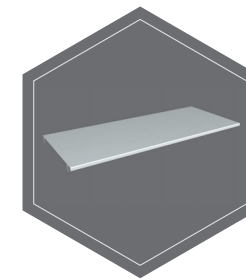
The picture shows an example of a safe for documents - model Hagen 39318 with additional equipment.



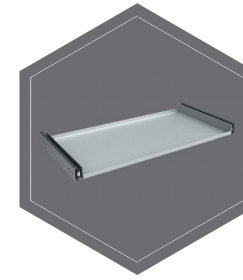
Inner safe



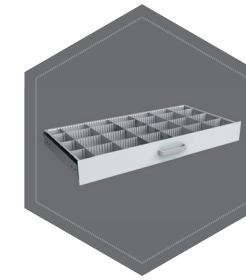
Inner safe with partition wall, 2 - door



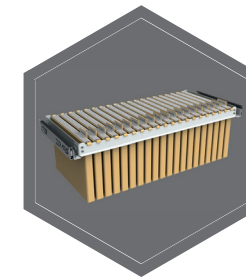
Shelf



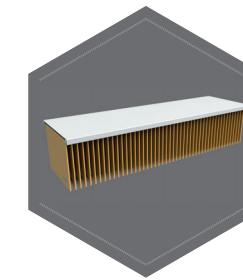
Extendable shelf



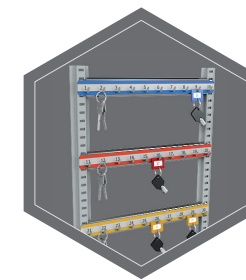
Extendable drawer for individual arrangement



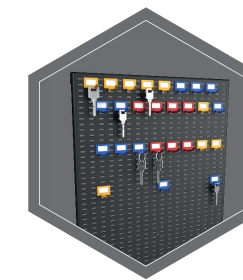
Extendable file frame



Shelf for hanging files



Hook bars



System of hooks on the inner side of the doors