

Model
Augsburg



Suitable for the storage of:
key

Description
Augsburg series - key cabinets with the wall mounting option. Adjustable, colourful and numbered hook bars.
Index holder in standard.

Body: single-walled body (1 mm thick)
Door: single-walled door (1 mm thick)
Locking: 1-way locking system

Standard option
Lock: cylindrical lock with two keys
Hinges: internal
Door opening angle: 120°
Mounting holes: 4 holes in back wall
Colour: RAL 7035 (light grey)

Model
Augsburg

Art. No.	Model	Outer dimensions*			Inner dimensions			Anchoring		Hooks in total	Weight
		Height mm	Width mm	Depth mm	Height mm	Width mm	Depth mm	Bottom number	Backwall number	Number	Kg
04001	Augsburg	350	270	80	348	268	79	0	4	21	2,6
04002	Augsburg	350	270	80	348	268	79	0	4	42	3,0
04003	Augsburg	450	300	80	448	298	79	0	4	32	3,5
04004	Augsburg	450	300	80	448	298	79	0	4	64	3,7
04005	Augsburg	550	380	80	548	378	79	0	4	50	5,0
04006	Augsburg	550	380	80	548	378	79	0	4	100	5,5

* excluding hinges, handles and fittings



Body: single-walled body (1 mm thick)



Door: single-walled door (1 mm thick)

Closure options

Standard

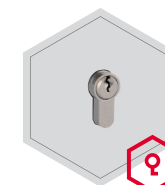
Options available against surcharge



Cam lock



Preparation for Euro profile lock



Euro profile lock



Cylindrical combination lock

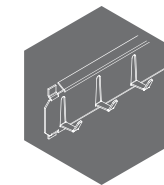


Electronic lock

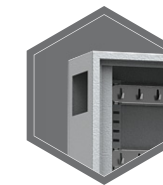
Accessories available against surcharge



Key rings



Hook bars



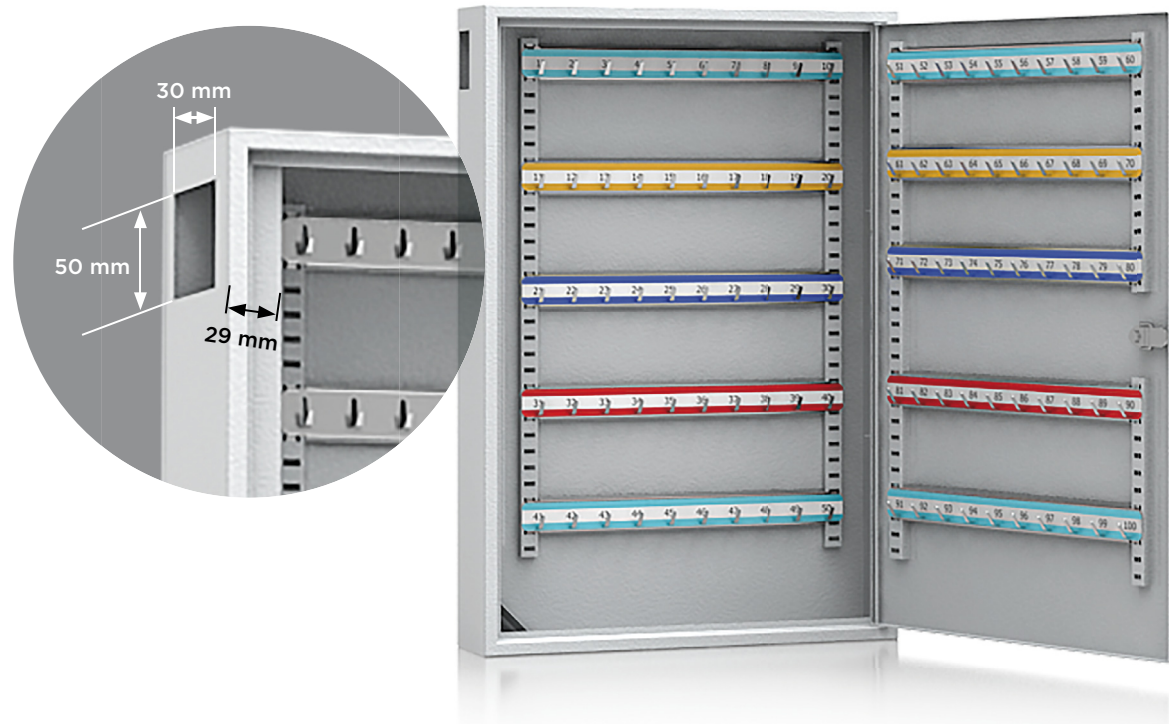
Side deposit slot

Colour options without surcharge








All information concerning weight, color and dimensions are noncommittal and subject to errors and changes. Minor deviations are conditional on the production process. Technical changes, modifications and printing errors reserved. Safes may be top-heavy, during commissioning, please exercise appropriate caution in accordance with the installation guide. Pictograms are not technical description of the product.

The picture shows an example of a key cabinet - model Augsburg Art. no. 04006.



Key ring options against surcharge.



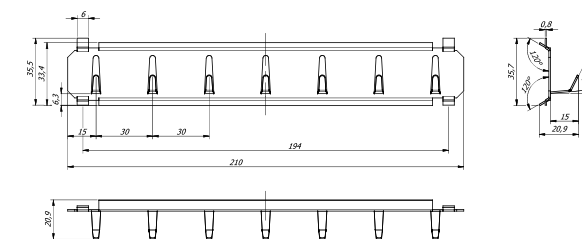
Color	Art. no.
 blue	Art. 15023.00
 green	Art. 15023.01
 yellow	Art. 15023.02
 red	Art. 15023.03
 black	Art. 15023.04

Art. No.	Model	Hook bars			Hooks on hook bar			Partition wall Number	Hooks in total Number
		Back wall Number	Door Number	Partition wall Number	Back wall Number	Door Number	Partition wall Number		
04001	Augsburg	3	-	-	7	-	-	-	21
04002	Augsburg	3	3	-	7	7	-	-	42
04003	Augsburg	4	-	-	8	-	-	-	32
04004	Augsburg	4	4	-	8	8	-	-	64
04005	Augsburg	5	-	-	10	-	-	-	50
04006	Augsburg	5	5	-	10	10	-	-	100

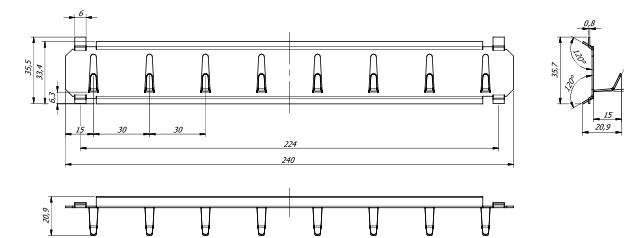
Hook bars

Standard

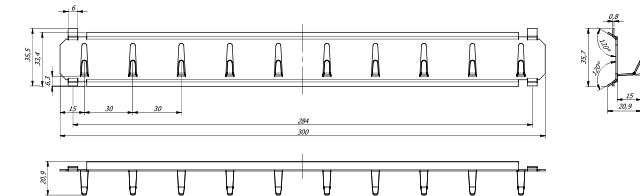
Art. no. 02007



Art. no. 02008

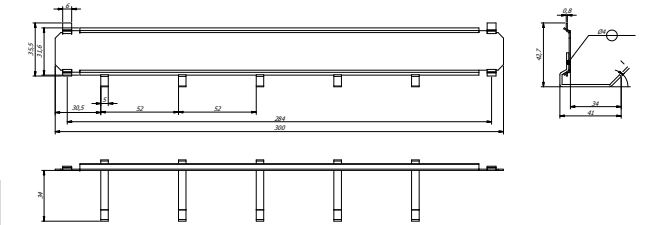


Art. no. 02010

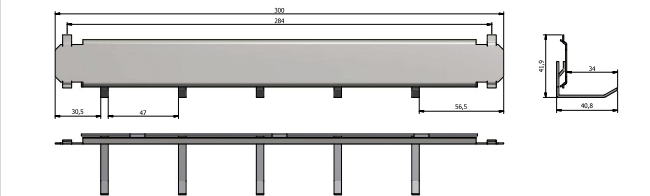


Hook bars options available against surcharge (Art. no 04005, 04006)

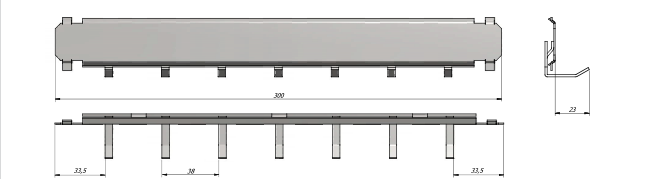
Art. no. 02011



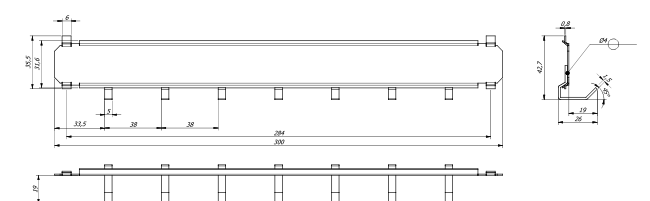
Art. no. 02012



Art. no. 02013



Art. no. 02014



Bar

