

## Model Bern Deposit



### Security level: Class D-II according to EN 1143-2

The values can be deposited in the so called Safe-bags, common envelopes, cash boxes and similar containers. Depending on the tenacity of the deposit container, the dimensions of values to be stored can be as follows:  
thickness 70 mm / width 220 mm / length 320 mm.

Models with 1300 mm height made with wall brackets for shelving (shelf - option against surcharge).

Suitable for the storage of:

- office documents, office equipment
- valuables

### Description

Bern Deposit series - drawer deposit safes.

**Body:** multi-walled body (50 mm thick)

**Door:** multi-walled door construction (106 mm thick)

**Locking:** 4-way locking bolt system - incl. overlapping profile on the hinge side

### Standard option

**Lock:** safe and the drawer, each equipped with high security key lock I class VdS with two keys

**Boltwork handle:** main door with the knob protruding 12 mm, the drawer equipped with the grip

**Hinges:** external

**Door opening angle:** 180°

**Mounting holes:** 4 holes in the floor, 1 blind hole in the back wall

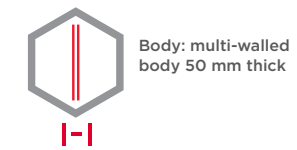
**Colour:** RAL 7035 (light grey)



## Model Bern Deposit

Art. No.	Model	Outer dimensions*			Inner dimensions			Door light		Anchoring		Drawer	Weight
		H mm	W mm	D mm	H mm	W mm	D mm	H mm	W mm	Bottom number	Backwall number		
36360.00	Bern Deposit	950	590	550	265	480	390	498	474	4	1 **	in front	284
36361.00	Bern Deposit	1300	590	550	615	480	390	848	474	4	1 **	in front	356
36362.00	Bern Deposit	950	590	550	265	480	390	498	474	4	1 **	in the back	283
36363.00	Bern Deposit	1300	590	550	615	480	390	848	474	4	1 **	in the back	356
36364.00	Bern Deposit	950	750	550	265	640	390	498	634	4	1 **	drawer in front with money partition	340
36365.00	Bern Deposit	1300	750	550	615	640	390	848	634	4	1 **	drawer in front with money partition	424
36366.00	Bern Deposit	950	590	550+270	265	480	390	498	474	4	1 **	drawer in the back 270 mm	328
36367.00	Bern Deposit	1300	590	550+270	615	480	390	848	474	4	1 **	drawer in the back 270 mm	401

\* excluding hinges, handles and fittings \*\* not drilled



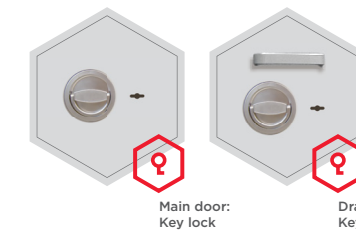
Body: multi-walled body 50 mm thick



Door: multi-walled door construction 106 mm thick

### Closure options

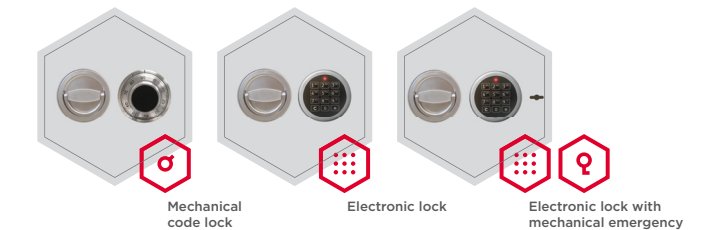
Standard option



Main door: Key lock

Drawer: Key lock

Options available against surcharge

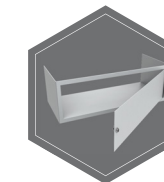


Mechanical code lock

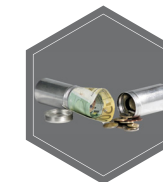
Electronic lock

Electronic lock with mechanical emergency

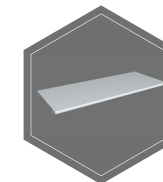
### Accessories available against surcharge



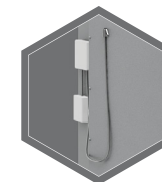
Inner safe



Safe box



shelf



Prepared for alarm system/ alarm system



RAL 7035



RAL 9006



RAL 7024

All information concerning weight, color and dimensions are noncommittal and subject to errors and changes. Minor deviations are conditional on the production process. Technical changes, modifications and printing errors reserved. Safes may be top-heavy, during commissioning, please exercise appropriate caution in accordance with the installation guide. Pictograms are not technical description of the product.