



Security level: Class S2 according to EN 14450
Security level: B according to VDMA 24992 - Conditions May ,95

Suitable for the storage of:
 office documents, office equipment
 keys

Description
 Dortmund series - High security safes with light fire protection.

Body: double-walled body (60 mm thick)
Door: double-walled door construction (78 mm thick)
Locking: 4-way locking bolt system

Standard option
Lock: high security key lock I class VdS with two keys (65 mm)
Boltwork handle: handle, protruding 60 mm
Hinges: external
Door opening angle: 180°
Mounting holes: 2 holes in the floor and in backwall
Colour: RAL 7035 (light grey)



Art. No.	Model	Outer dimensions*			Inner dimensions			Door light		Anchoring		Weight Kg	Shelves Number	Files Number	Volume Liters
		Height mm	Width mm	Depth mm	Height mm	Width mm	Depth mm	Height mm	Width mm	Bottom number	Backwall number				
35100	Kassel	600	650	510	480	518	364	476	526	2	2	200	1	6	90
35101	Kassel	600	650	510	480	518	364	476	526	2	2	300	1	6	90
35102	Kassel	800	650	510	680	518	364	676	526	2	2	200	2	12	128
35103	Kassel	800	650	510	680	518	364	676	526	2	2	300	2	12	128
35104	Kassel	1200	650	510	1080	518	364	1076	526	2	2	200	2	18	203
35105	Kassel	1200	650	510	1080	518	364	1076	526	2	2	300	2	18	203
35106	Kassel	1500	650	510	1380	518	364	1376	526	2	2	200	3	24	260
35107	Kassel	1500	650	510	1380	518	364	1376	526	2	2	300	3	24	260
35108	Kassel	1600	650	510	1480	518	364	1476	526	2	2	300	3	24	279
35109	Kassel	1800	650	510	1680	518	364	1676	526	2	2	350	4	24	316
35110	Kassel	1800	1000	510	1680	868	364	1676	876	2	2	460	4	44	530

* excluding hinges, handles and fittings



Body: double-walled body 60 mm thick

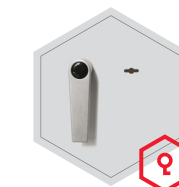


Door: double-walled door construction 78 mm thick

Closure options



Standard option



Key lock

Options available against surcharge



Mechanical code lock



Electronic lock

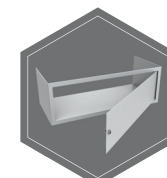


Electronic lock with mechanical emergency

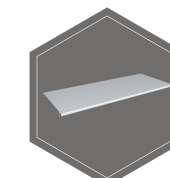
Accessories available against surcharge



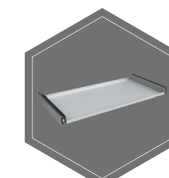
Left door



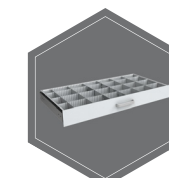
Inner safe



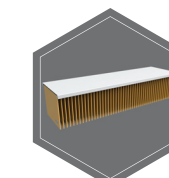
Shelf



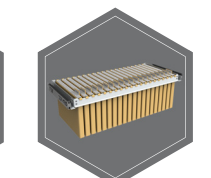
Extendable shelf



Extendable drawer for individual arrangement



Shelf for hanging files (Excl. 35100 - 35103)



Extensible file frame (Excl. 35100 - 35103)



All information concerning weight, color and dimensions are noncommittal and subject to errors and changes. Minor deviations are conditional on the production process. Technical changes, modifications and printing errors reserved. Safes may be top-heavy, during commissioning, please exercise appropriate caution in accordance with the installation guide. Pictograms are not technical description of the product.