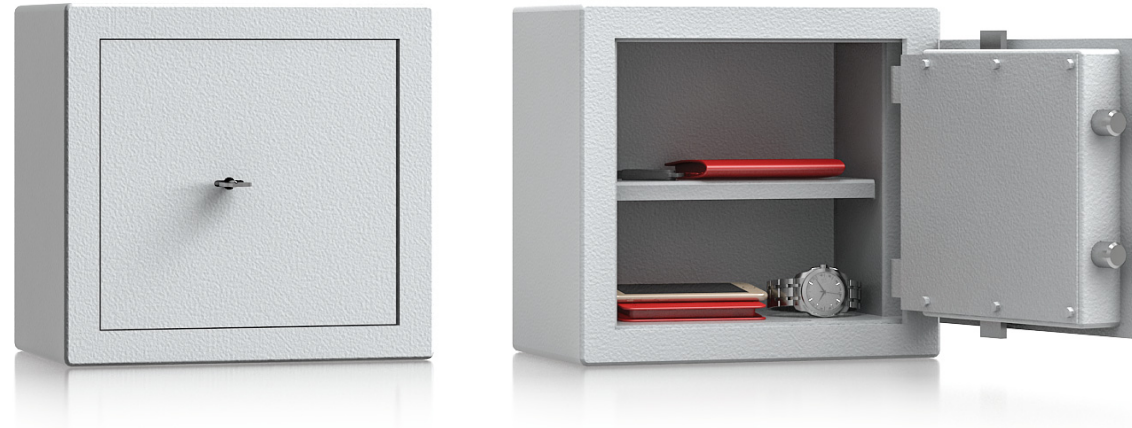


Model **Bielefeld**



**Security level: B according to VDMA 24992 - Conditions May'95**

Suitable for the storage of:

- documents
- keys

**Description**  
Bielefeld series - furniture safes.

**Body:** double-walled body (30 mm thick)  
**Door:** double-walled door construction (45 mm thick)  
**Locking:** 4-way locking bolt system

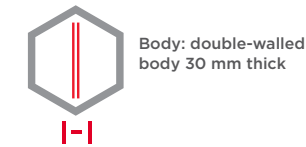
**Standard option**  
**Lock:** high security key lock I class VdS with two keys  
**Hinges:** internal  
**Door opening angle:** 90°  
**Mounting holes:** 2 holes in the back wall  
**Colour:** RAL 7035 (light grey)



Model **Bielefeld**

Art. No.	Model	Outer dimensions*			Inner dimensions			Door light		Anchoring		Weight	Shelves	Volume
		Height mm	Width mm	Depth mm	Height mm	Width mm	Depth mm	Height mm	Width mm	Bottom number	Backwall number	Kg	Number	Liters
34000	Bielefeld	196	306	190	136	246	109	136	217	-	2	16	-	3
34001	Bielefeld	236	306	190	176	246	109	176	217	-	2	18	1	4
34002	Bielefeld	286	306	190	226	246	109	226	217	-	2	21	1	6

\* excluding hinges, handles and fittings



Closure options

Standard option



Options available against surcharge



Alternative options



All information concerning weight, color and dimensions are noncommittal and subject to errors and changes. Minor deviations are conditional on the production process. Technical changes, modifications and printing errors reserved. Safes may be top-heavy, during commissioning, please exercise appropriate caution in accordance with the installation guide. Pictograms are not technical description of the product.