



Security level: Class S2 according to EN 14450/VdS 2862
Fire rating: Fire-protected safes according to EN 15659 LFS 60 P

Suitable for the storage of:

- documents
- valuables

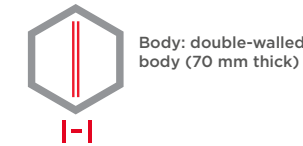
Description
 Model Weimar - high security safe - document safe with fire resistance LFS 60 P.

Body: double-walled body (70 mm thick)
Door: multi-walled door construction (95 mm thick)
Locking: 4-way locking bolt system - incl. fix bolts on the hinge side

Standard option
Lock: high security key lock I class VdS with two keys (95 mm)
Boltwork handle: handle, protruding 60 mm
Hinges: external
Door opening angle: 180°
Mounting holes: 2 holes in the floor and/or 2 in the back wall
Colour: RAL 7035 (light grey)

Art. No.	Model	Outer dimensions*			Inner dimensions			Door light		Anchoring		Weight Kg	Shelves Number	Files Number	Volume Liters
		Height mm	Width mm	Depth mm	Height mm	Width mm	Depth mm	Height mm	Width mm	Bottom number	Backwall number				
42800.02	Weimar	380	480	465	240	340	300	238	338	2	2**	81	0	3	24
42801.02	Weimar	430	480	465	290	340	300	288	338	2	2**	86	1	3	30
42802.02	Weimar	470	480	465	330	340	300	328	338	2	2**	91	1	4	34
42803.02	Weimar	820	480	465	680	340	300	678	338	2	- ***	131	1	8	69
42804.02	Weimar	1170	480	465	1030	340	300	1028	338	2	- ***	198	2	12	105

* excluding hinges, handles and fittings ** not drilled *** optional



Closure options

Standard option Options available against surcharge

Key lock

Changeable lock

Mechanical code lock

Electronic lock

Accessories available against surcharge

Inner safe (from 42803.02)

Extendable shelf

Extendible file frame (42803.02, 42804.02)

Shelf on telescopic rails

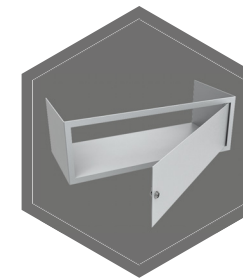
Extendable drawer for individual arrangement



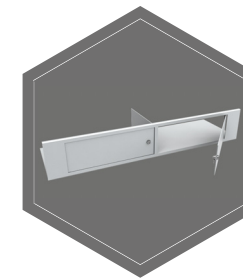
All information concerning weight, color and dimensions are noncommittal and subject to errors and changes. Minor deviations are conditional on the production process. Technical changes, modifications and printing errors reserved. Safes may be top-heavy, during commissioning, please exercise appropriate caution in accordance with the installation guide. Pictograms are not technical description of the product.



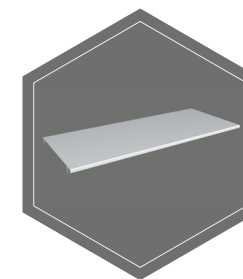
The picture shows an example of a safe for documents - model Hagen 39318 with additional equipment.



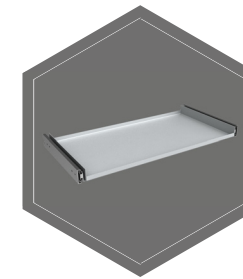
Inner safe



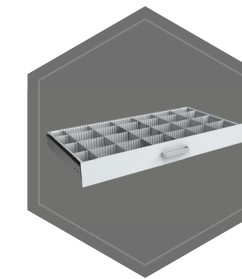
Inner safe with partition wall, 2 - door



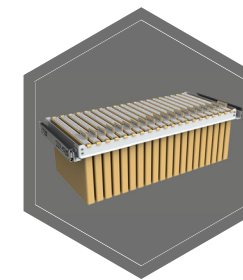
Shelf



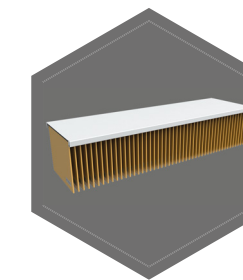
Extendable shelf



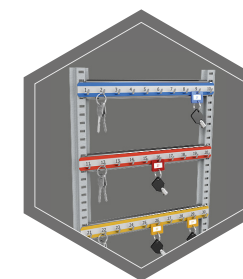
Extendable drawer for individual arrangement



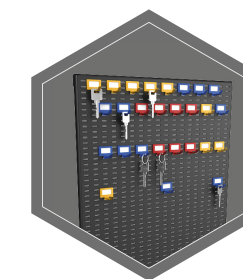
Extensible file frame



Shelf for hanging files



Hook bars



System of hooks on the inner side of the doors