

Security level: Class III according to EN 1143-1
Fire rating: Fire-protected safes according to EN 15659 LFS 30 P

Feature - The safe has been approved in accordance with EN 15659 in LFS 30 P fire class.

Suitable for the storage of:

- office documents, office equipment
- valuables

Description

Rom series - high security safes with light fire protection.

Body: multi-walled body (60 mm thick)

Door: multi-walled door construction (130 mm thick)

Locking: 4-way locking bolt system - incl. overlapping profile on the hinge side

Standard option

Lock: high security key lock II class VdS with two keys (170 mm)

Boltwork handle: handle, protruding 60mm

Hinges: external

Door opening angle: 180°

Mounting holes: 1 hole in the floor

Colour: RAL 7035 (light grey)

Art. No.	Model	Outer dimensions*			Inner dimensions			Door light		Anchoring		Weight Kg	Shelves Number	Files Number	Volume Liters
		Height mm	Width mm	Depth mm	Height mm	Width mm	Depth mm	Height mm	Width mm	Bottom number	Backwall number				
42001	Rom	606	636	510	456	504	304	441	486	1	-	354	1	6	70
42002	Rom	806	636	510	656	504	304	641	486	1	-	447	2	6	101
42003	Rom	906	636	510	756	504	304	741	486	1	-	492	2	12	116
42004	Rom	1006	636	510	856	504	304	841	486	1	-	536	2	12	131
42005	Rom	1206	636	510	1056	504	304	1041	486	1	-	633	3	18	162
42006	Rom	1506	806	550	1356	674	344	1341	656	1	-	936	3	24	315
42007	Rom	1806	806	550	1656	674	344	1641	656	1	-	1100	4	32	384
42008	Rom	800	700	550	650	568	344	635	550	1	-	499	2	7	127
42009	Rom	1250	700	550	1100	568	344	1085	550	1	-	721	3	21	215
42010	Rom	1500	700	550	1350	568	344	1335	550	1	-	848	3	21	264
42011	Rom	1950	700	550	1800	568	344	1785	550	1	-	1019	4	35	352
42012	Rom **	1950	950	550	1800	818	344	1785	800	1	-	1355	4	55	507
42013	Rom **	1950	1260	550	1800	1128	344	1785	1110	1	-	1547	4	75	698
42014	Rom **	1806	1486	550	1656	1354	344	1641	1336	1	-	1780	4	72	771
42015	Rom	1006	836	700	856	704	494	841	686	1	-	769	2	18	298
42016	Rom	1256	836	700	1106	704	494	1091	686	1	-	942	3	27	385
42017	Rom	1506	836	700	1356	704	494	1341	686	1	-	1067	3	27	472
42018	Rom	1806	836	700	1656	704	494	1641	686	1	-	1245	4	36	576
42019	Rom **	1806	1200	700	1656	1068	494	1641	1050	1	-	1641	4	56	874

* excluding hinges, handles and fittings ** 2-door



Body: multi-walled body 60 mm thick



Door: multi-walled door construction 130 mm thick

Closure options

Standard option



Key lock

Options available against surcharge



Mechanical code lock



Electronic lock

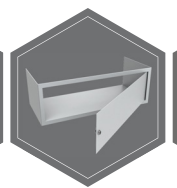


Electronic lock with mechanical emergency (Excl. 42012)

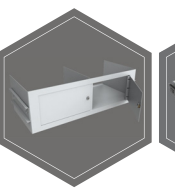
Accessories available against surcharge



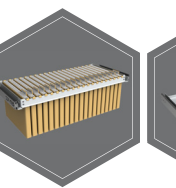
Left door



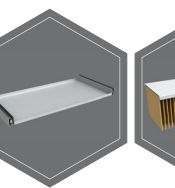
Inner safe (Excl. 42012-42014; 42019)



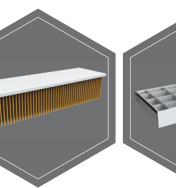
Inner safe with partition wall, 2 - door (Excl. 42001-42011; 42015-42018)



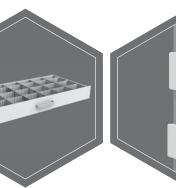
Extensible file frame



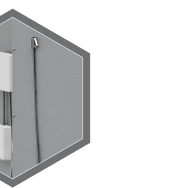
Extendable shelf



Shelf for hanging files



Extendable drawer for individual arrangement



Alarm system elements/Alarm system



All information concerning weight, color and dimensions are noncommittal and subject to errors and changes. Minor deviations are conditional on the production process. Technical changes, modifications and printing errors reserved. Safes may be top-heavy, during commissioning, please exercise appropriate caution in accordance with the installation guide. Pictograms are not technical description of the product.