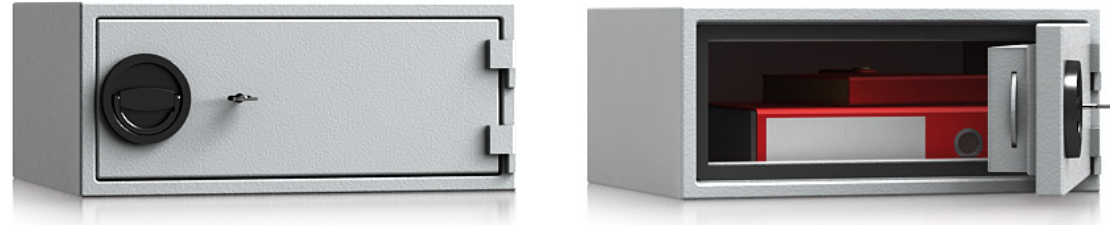


Model  
**Offenbach-Bieber**



**Security level: Class S1 according to EN 14450**  
**Security level: A according to VDMA 24992 - Conditions May '95**  
**Fire rating: Fire-protected safes according to EN 15659 LFS 30 P**

Suitable for the storage of:  
 office documents, office equipment  
 keys

**Description**  
 Offenbach-Bieber series - Furniture safes.

**Body:** double-walled body (18 mm thick)  
**Door:** double-walled door construction (74 mm thick)  
**Locking:** 2-way locking bolt system - incl. overlapping profile on the hinge side

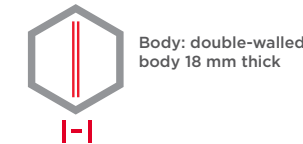
**Standard option**  
**Lock:** high security key lock I class VdS with two keys (95 mm)  
**Boltwork handle:** knob, protruding 12 mm  
**Hinges:** external  
**Door opening angle:** 180°  
**Mounting holes:** 2 holes in the floor and 1 in back wall  
**Colour:** RAL 7035 (light grey)



Model  
**Offenbach-Bieber**

Art. No.	Model	Outer dimensions*			Inner dimensions			Door light		Anchoring		Weight	Shelves	Volume
		Height mm	Width mm	Depth mm	Height mm	Width mm	Depth mm	Height mm	Width mm	Bottom number	Backwall number	Kg	Number	Liters
32800	Offenbach-Bieber	200	470	383	167	434	291	132	402	2	1	29,3	-	21
32801	Offenbach-Bieber	470	200	383	437	164	291	402	132	2	1	29,3	-	21

\* excluding hinges, handles and fittings



Closure options

	Standard option	Options available against surcharge
	Key lock	Electronic lock



All information concerning weight, color and dimensions are noncommittal and subject to errors and changes. Minor deviations are conditional on the production process. Technical changes, modifications and printing errors reserved. Safes may be top-heavy, during commissioning, please exercise appropriate caution in accordance with the installation guide. Pictograms are not technical description of the product.