



## INNER BLOCKAGE

Additional protection from the inside (55435.01).

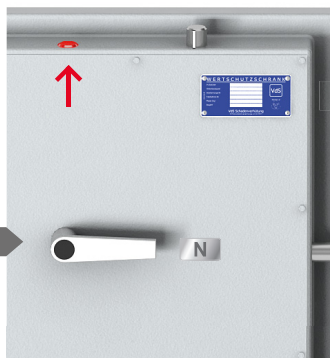
Standard: movable locking handle and permanent handle.

### Mode of action



#### interior handle

- neutral position
- handle in horizontal position



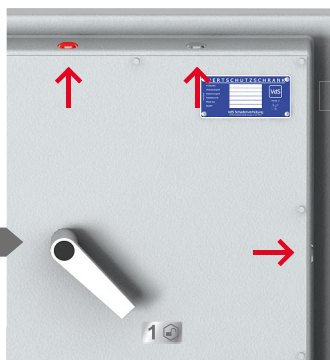
#### outer lock and handle

- lock and handle enabled
- possibility of closing and opening lock



#### interior handle

- position 45°
- activates locking mechanism
- doors bolts hidden



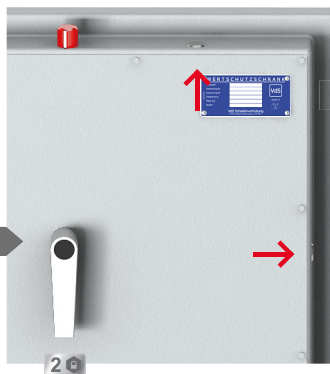
#### outer lock and handle

- locked
- not possible to lock from outside
- the ability to open the doors



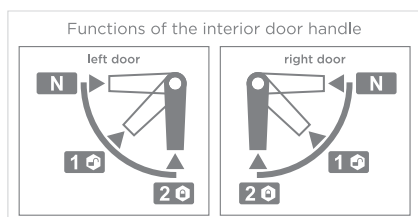
#### interior handle

- vertical position
- activates additional independent locking bolt
- doors bolts hidden



#### outer lock and handle

- locked
- not possible to lock from outside
- not possible to open or lock the doors from outside



Inner blockage can be used for all the doors produced in ISS.

It's not used with additional keyboards from inside.

